

120 York Street  
 Kennebunk, ME 04046  
 (207) 467-3478

ISO 17025:2017 Certification  
 ANAB Certificate Number AT-2169  
 Maine CDC Accreditation # MTF001  
 Office of Marijuana Policy MTF328

**Amount Received:**

**Collected by:** Client

## REPORT OF ANALYSIS

**Sea Point Cannabis**

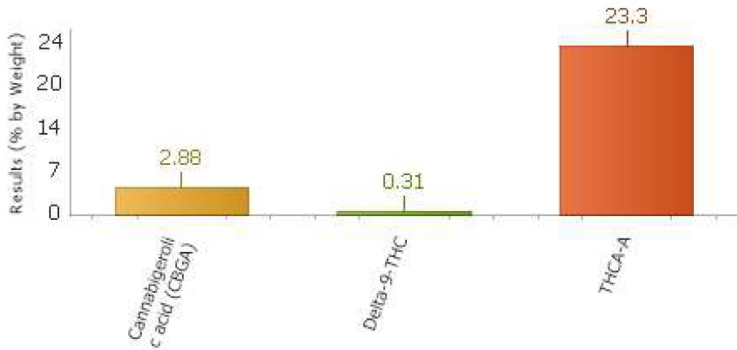
**C22050192.15**

**Sugar Cake(Plant Material)**

**Date sampled :** 05/09/2022

**Reported Date:** 05/13/2022

**Temp Received:**



### ***Cannabinoids by HPLC***

| <b>Analyte</b>                | <b>Result</b> | <b>Reporting Limit</b> | <b>Units</b> | <b>Q</b> | <b>Analyzed</b>     | <b>Method</b> | <b>Analyst</b> | <b>Pass/Fail Limit</b> | <b>Test Remarks</b> |
|-------------------------------|---------------|------------------------|--------------|----------|---------------------|---------------|----------------|------------------------|---------------------|
| Cannabivarin (CBDV)           | ND            | 0.1                    | % by Weight  |          | 05/11/2022<br>23:59 | HPLC SOP-7    | NRS            | N/A                    |                     |
| Cannabidiolic acid (CBDA)     | ND            | 0.1                    | % by Weight  |          | 05/11/2022<br>23:59 | HPLC SOP-7    | NRS            | N/A                    |                     |
| Cannabigerolic acid (CBGA)    | <b>2.88</b>   | 0.1                    | % by Weight  |          | 05/11/2022<br>23:59 | HPLC SOP-7    | NRS            | N/A                    |                     |
| Cannabigerol (CBG)            | ND            | 0.1                    | % by Weight  |          | 05/11/2022<br>23:59 | HPLC SOP-7    | NRS            | N/A                    |                     |
| Cannabidiol (CBD)             | ND            | 0.1                    | % by Weight  |          | 05/11/2022<br>23:59 | HPLC SOP-7    | NRS            | N/A                    |                     |
| Tetrahydrocannabivarin (THCV) | ND            | 0.1                    | % by Weight  |          | 05/11/2022<br>23:59 | HPLC SOP-7    | NRS            | N/A                    |                     |
| Cannabinol (CBN)              | ND            | 0.1                    | % by Weight  |          | 05/11/2022<br>23:59 | HPLC SOP-7    | NRS            | N/A                    |                     |
| Delta-9-THC                   | <b>0.310</b>  | 0.1                    | % by Weight  |          | 05/11/2022<br>23:59 | HPLC SOP-7    | NRS            | N/A                    |                     |
| Delta-8-THC                   | ND            | 0.1                    | % by Weight  |          | 05/11/2022<br>23:59 | HPLC SOP-7    | NRS            | N/A                    |                     |
| Cannabichromene (CBC)         | ND            | 0.1                    | % by Weight  |          | 05/11/2022<br>23:59 | HPLC SOP-7    | NRS            | N/A                    |                     |
| THCA-A                        | <b>23.3</b>   | 0.1                    | % by Weight  |          | 05/11/2022<br>23:59 | HPLC SOP-7    | NRS            | N/A                    |                     |

### ***Total Cannabinoids by HPLC (Calculated)***

| <b>Analyte</b>                    | <b>Result</b> | <b>Reporting Limit</b> | <b>Units</b> | <b>Q</b> | <b>Analyzed</b>     | <b>Method</b> | <b>Analyst</b> | <b>Pass/Fail Limit</b> | <b>Test Remarks</b> |
|-----------------------------------|---------------|------------------------|--------------|----------|---------------------|---------------|----------------|------------------------|---------------------|
| CBD+CBDA- Calculated              | ND            | 0.1                    | % by Weight  |          | 05/11/2022<br>23:59 | HPLC SOP-7    | NRS            | N/A                    |                     |
| Total CBD-(Max CBD) Calculated    | ND            | 0.1                    | % by Weight  |          | 05/11/2022<br>23:59 | HPLC SOP-7    | NRS            | N/A                    |                     |
| THC+THCA- Calculated              | <b>23.6</b>   | 0.1                    | % by Weight  |          | 05/11/2022<br>23:59 | HPLC SOP-7    | NRS            | N/A                    |                     |
| Total THC-(Max THC) Calculated    | <b>21.4</b>   | 0.1                    | % by Weight  |          | 05/11/2022<br>23:59 | HPLC SOP-7    | NRS            | N/A                    |                     |
| Total THC-(Max THC+D8) Calculated | <b>21.4</b>   | 0.1                    | % by Weight  |          | 05/11/2022<br>23:59 | HPLC SOP-7    | NRS            | N/A                    |                     |
| Total Cannabinoids- Calculated    | <b>26.5</b>   | 0.1                    | % by Weight  |          | 05/11/2022<br>23:59 | HPLC SOP-7    | NRS            | N/A                    |                     |

*Results as reported above relate only to samples as submitted, unless specifically noted otherwise.*