

120 York Street  
Kennebunk, ME 04046  
(207) 467-3478

ISO 17025:2017 Certification  
ANAB Certificate Number AT-2169  
Maine CDC Accreditation # MTF001  
Office of Marijuana Policy MTF328

**Amount Received:**

## REPORT OF ANALYSIS

**Date sampled :** 08/16/2021

**Collected by:** Client

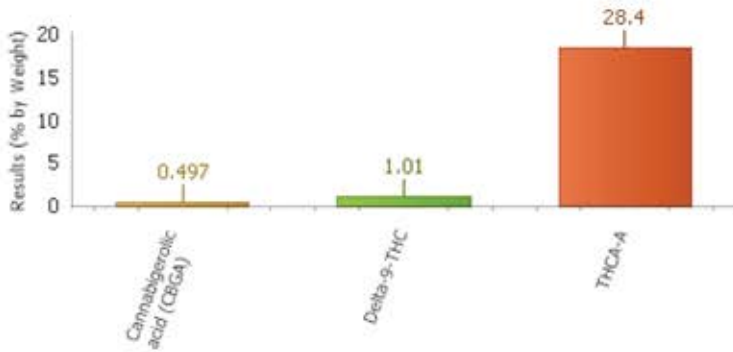
**Sea Point Cannabis**

**Reported Date:** 08/19/2021

**C21080366.09**

**Temp Received:**

**Mimosa(Plant Material)**



### ***Cannabinoids by HPLC***

Analyte	Result	Reporting Limit	Units	Q	Analyzed	Method	Analyst	Pass/Fail Limit	Test Remarks
Cannabidivarin (CBDV)	ND	0.1	% by Weight		08/18/2021 03:30	HPLC SOP-7	LAM	N/A	
Cannabidiolic acid (CBDA)	ND	0.1	% by Weight		08/18/2021 03:30	HPLC SOP-7	LAM	N/A	
Cannabigerolic acid (CBGA)	<b>0.497</b>	0.1	% by Weight		08/18/2021 03:30	HPLC SOP-7	LAM	N/A	
Cannabigerol (CBG)	ND	0.1	% by Weight		08/18/2021 03:30	HPLC SOP-7	LAM	N/A	
Cannabidiol (CBD)	ND	0.1	% by Weight		08/18/2021 03:30	HPLC SOP-7	LAM	N/A	
Tetrahydrocannabivarin (THCV)	ND	0.1	% by Weight		08/18/2021 03:30	HPLC SOP-7	LAM	N/A	
Cannabinol (CBN)	ND	0.1	% by Weight		08/18/2021 03:30	HPLC SOP-7	LAM	N/A	
Delta-9-THC	<b>1.01</b>	0.1	% by Weight		08/18/2021 03:30	HPLC SOP-7	LAM	N/A	
Delta-8-THC	ND	0.1	% by Weight		08/18/2021 03:30	HPLC SOP-7	LAM	N/A	
Cannabichromene (CBC)	ND	0.1	% by Weight		08/18/2021 03:30	HPLC SOP-7	LAM	N/A	
THCA-A	<b>28.4</b>	0.1	% by Weight		08/18/2021 03:30	HPLC SOP-7	LAM	N/A	

### ***Total Cannabinoids by HPLC (Calculated)***

Analyte	Result	Reporting Limit	Units	Q	Analyzed	Method	Analyst	Pass/Fail Limit	Test Remarks
CBD+CBDA- Calculated	ND	0.1	% by Weight		08/18/2021 03:30	HPLC SOP-7	LAM	N/A	
Total CBD-(Max CBD) Calculated	ND	0.1	% by Weight		08/18/2021 03:30	HPLC SOP-7	LAM	N/A	
THC+THCA- Calculated	<b>29.4</b>	0.1	% by Weight		08/18/2021 03:30	HPLC SOP-7	LAM	N/A	
Total THC-(Max THC) Calculated	<b>27.1</b>	0.1	% by Weight		08/18/2021 03:30	HPLC SOP-7	LAM	N/A	
Total THC-(Max THC+D8) Calculated	<b>27.1</b>	0.1	% by Weight		08/18/2021 03:30	HPLC SOP-7	LAM	N/A	
Total Cannabinoids- Calculated	<b>29.9</b>	0.1	% by Weight		08/18/2021 03:30	HPLC SOP-7	LAM	N/A	

*Results as reported above relate only to samples as submitted, unless specifically noted otherwise.*